



# OPTOS

WALL SCONCES

location:  
**DAMP**

## SPECIFICATIONS:

### DESCRIPTION

Accent lighting sconce with dual lenses, lens unit swivels 359° where it attaches to the canopy.

### LAMPING

**Standard:** 40W low-pressure G9 Halogen 120V lamps, lamp included.

Lamps are suitable for use in an open fixture.

**LED:** 5W LED Replaceable source 120V, CL dimmable, 90+ CRI, 3000°K CCT, 450 lumens, 25,000 hours, lamp included.

### LENSES

3.5" Diameter. Domed flood light glass lenses are available in combinations.

Options include Clear, Frosted, Dicro Warm, Dicro Cool.

### CANOPY

Canopy (4.375" Sq.) and Faceplate (5") is plated metal.

### METAL FINISH

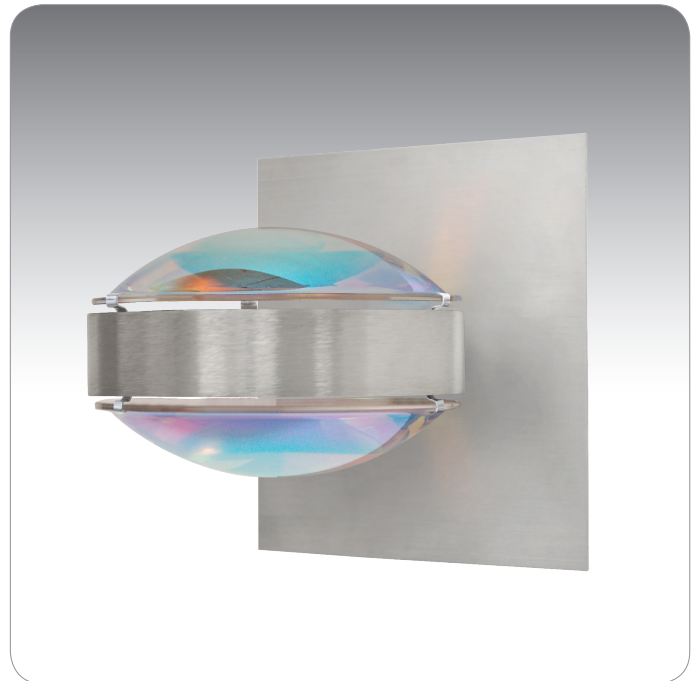
Canopy and lens unit hardware shall be finished in Chrome or Brushed Aluminum

### MOUNTING

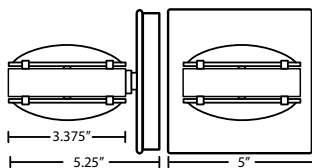
Installs directly to a 4" junction box. Unit secures with concealed screws.

### LABELS

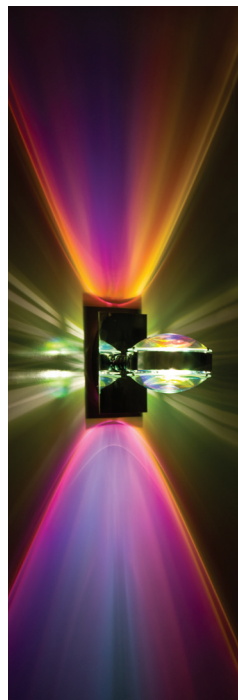
UL or ETL Listed. Suitable for Damp Locations (interior use only).



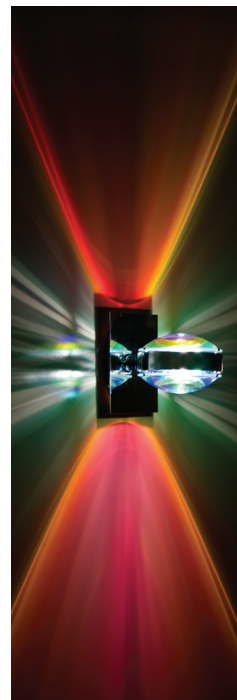
OPTOS SHOWN IN COOL DICRO/COOL DICRO (CDCD)



CL  
CLEAR



CD  
COOL DICRO



WD  
WARM DICRO



FR  
FROST

For ordering information, see next page

All dimensions provided are nominal.  
Allowance must be made for dimensional tolerance in handcrafted glasses.

REV 12/18



ORDERING:

FIXTURE/DECOR -	LENS COMBINATION -	LAMP OPTIONS -	METAL FINISH
<b>OPTOS1W</b> Sconce	<b>CDCD</b> Cool Dicro/Cool Dicro	<b>(blank)</b> 40W G9 Hal	<b>BA</b> Brushed Alum.
	<b>CDWD</b> Cool Dicro/Warm Dicro	<b>LED</b> 5W LED 120V,	<b>CR</b> Chrome
	<b>CLCD</b> Clear/Cool Dicro	dimmable	
	<b>CLCL</b> Clear/Clear		
	<b>CLFR</b> Clear/Frost		
	<b>CLWD</b> Clear/Warm Dicro		
	<b>FRFR</b> Frost/Frost		
	<b>FRCD</b> Frost/Cool Dicro		
	<b>FRWD</b> Frost/Warm Dicro		
	<b>WDWD</b> Warm Dicro/Warm Dicro		

**Ex. OPTOS1W-CLCL-BA**  
 Optos Wall Sconce w/ Clear and Clear Lens Combination,  
 Brushed Aluminum Finish

**Project Information:**