



KAYA 24

SCONCES OUTDOOR

location:
WET

SPECIFICATIONS:

DESCRIPTION

The Kaya 24 Sconce presents an exquisite design crafted from a steel fitter, complemented by top and bottom Satin White Glass. This stunning combination of materials creates a visually appealing fixture that offers a delicate and balanced illumination.

LAMPING

Standard: 2x Medium base sockets, lamp not included

LED: 2x 15W Replaceable LED source, 120V, CL dimmable, 90+ CRI, 3000°K CCT, 1200 lumens, 25,000 hours, lamp included.

DIFFUSER

Diffusers shall be of Glass in Satin White.

CONSTRUCTION

Steel fitter and canopy-cover available with plated finishes.

METAL FINISH

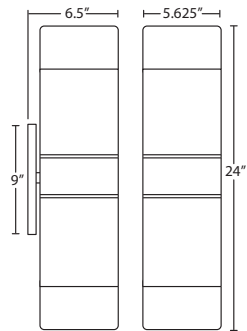
Decorative metal hardware shall be in Black, Bronze or Silver.

MOUNTING

Installs directly to a 4" octagonal outlet box. 75°C supply wire required for incandescent lamping. Fixture is centered on the outlet box.

LABELS

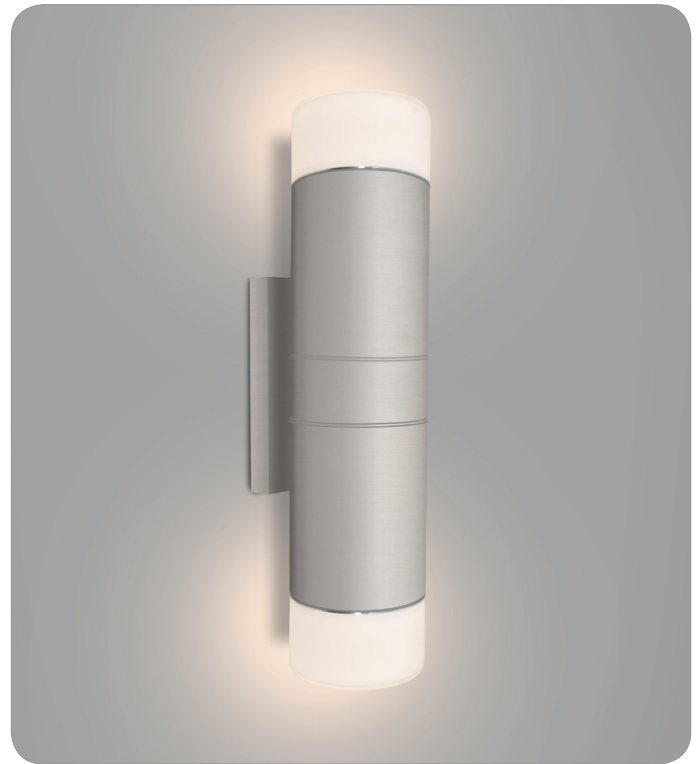
UL or ETL Listed. Suitable for Wet Locations (interior or exterior use).



ORDERING:

FIXTURE	-	DIFFUSER	-	LAMP OPTIONS	-	FINISH
KAYA24 Zaya	-	SW Satin White Glass	-	(blank) 2x 60W Incan. LED 2x 15W LED, 3000K LED35 3500K LED40 4000K LED50 5000K	-	BK Black BR Bronze SL Silver
Ex. KAYA24-SW-LED-SL Kaya 24 Outdoor Sconce, Silver Finish						

Project Information:



KAYA24-SW-SL (SILVER)

BRONZE

BLACK



All dimensions provided are nominal. Allowance must be made for dimensional tolerance in handcrafted glasses.

REV 11/22