



# BANDO

SCONCES OUTDOOR

location:  
**WET**

## SPECIFICATIONS:

### DESCRIPTION

Our Bando outdoor sconce is composed of a black finished mounting bracket and a sleek opal blown glass diffuser, with matching radiused and horizontally cut faceplate. Our Opal glass is a soft white cased glass that can suit any classic or modern decor. Opal has a very tranquil glow that is pleasing in appearance. The smooth satin finish on the clear outer layer is a result of an extensive etching process.

### LAMPING

**LED:** 2x5W Replaceable source, 120V, dimmable, 80+ CRI, 3000° K CCT, 450 lumens, 25,000 hours, lamp included.

### DIFFUSER

Diffuser shall be handcrafted glass of Opal decor with decorative faceplate. 7.375"W x 13.75" H x 4.25" D

### CONSTRUCTION

Stamped aluminum fitter and canopy-cover. Glass is secured by stainless steel set screws.

### METAL FINISHES

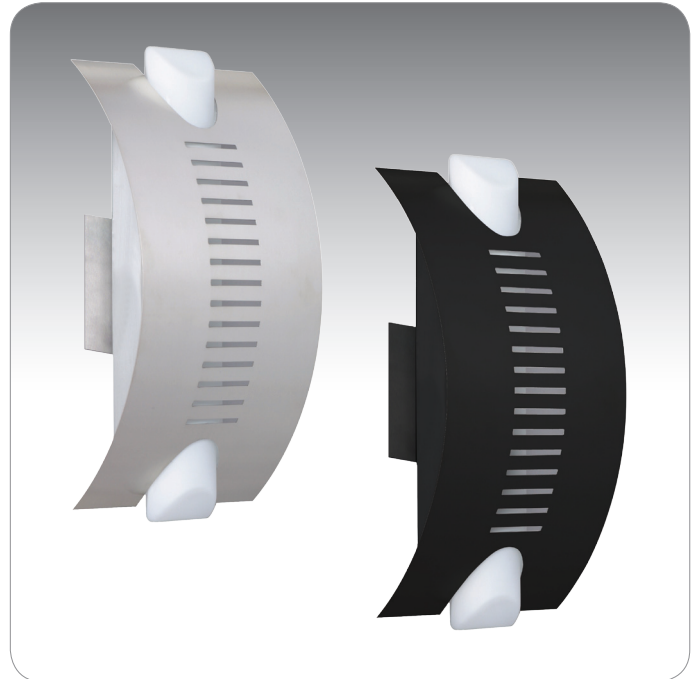
Aluminum powder-coated in Black or Silver.

### MOUNTING

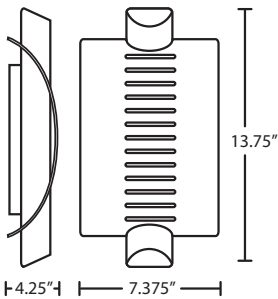
Installs directly to a 4" octagonal outlet box, centered on fixture. 75°C supply wire required for incandescent lamping.

### LABELS

UL Listed. Suitable for Wet Locations (interior or exterior use).



OPAL/SILVER (BANDOSL) & OPAL/BLACK (BANDOBK)



## ORDERING:

DECOR	LAMP OPTIONS
BANDOBK Opal/Black	LED 2x5W LED
BANDOSL Opal/Silver	3000K

**Ex. BANDOBK-LED**  
Bando Sconce, Opal/Black Shade,  
Black finish

**Project Information:**

All dimensions provided are nominal.  
Allowance must be made for dimensional tolerance in handcrafted glasses.

REV 1/22