



# KARLI

MINI SCONCES WALL

location:  
**DAMP**

## SPECIFICATIONS:

### DESCRIPTION

Wall-mounted sconce featuring one handcrafted glass.

### LAMPING

**Standard:** 50W G9 Halogen 120V, suitable for dimming, lamp included.

**LED:** 5W Replaceable source, 120V, CL dimmable, 80+ CRI, 3000°K CCT, 450 lumens, 25,000 hours, lamp included.

### DIFFUSER

Shade shall be handcrafted double glass of various decors.  
Outer diameter of 4.0" and height of 7.0"

### CONSTRUCTION

Fixture utilizes metal arm assembly with stamped steel canopy and faceplate (5" Dia.), with plated finish.

### METAL FINISH

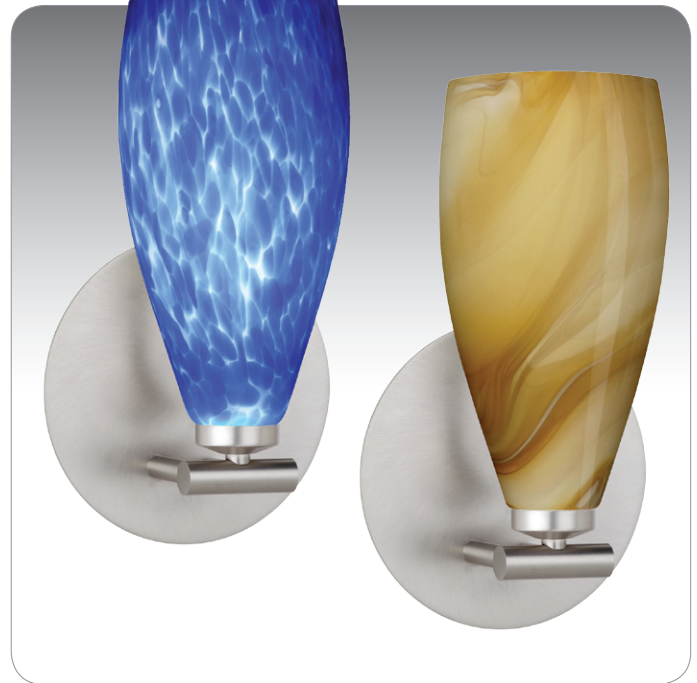
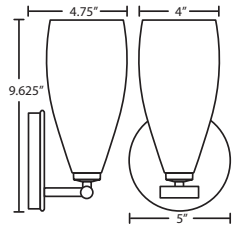
Fixture shall be finished in Bronze, Polished Nickel, or Satin Nickel.

### MOUNTING

Installs directly to a 4" octagonal outlet box. Wall-mount only.  
Designed for uplighting, but may also be oriented downward.

### LABELS

UL or ETL Listed. Suitable for Damp Locations (interior use only).



KARLI SHOWN IN CEYLON (7198CE) WITH BRONZE FINISH & HONEY (7198HN)

## ORDERING:

FIXTURE	GLASS OPTIONS	LAMP OPTIONS	METAL FINISH
1SX Sconce	719807 Opal Matte	(blank) 40W G9 Hal	BR Bronze
	719818 Amber Cloud	LED 5W LED 120V,	PN Polished Nickel
	719819 Carrera	dimnable	SN Satin Nickel
	719841 Garnet		
	719886 Blue Cloud		
	7198HN Honey		

**Ex. 1SX-719807-SN**  
Karli 1-Light Sconce w/ Opa Matte Glass, Satin Nickel Finish

**Project Information:**



All dimensions provided are nominal. Allowance must be made for dimensional tolerance in handcrafted glasses.

REV 8/21