



C A B O

VANITIES WALL

location:  
**DAMP**

**SPECIFICATIONS:**

**DESCRIPTION**

1-3 Light vanity luminaires featuring handcrafted glass.

**LAMPING**

**Standard:** 60W Medium-based 120V, lamp not included. Dimmable with standard incandescent dimmer (not included).

**LED:** 9W Replaceable source, 120V, dimmable, 90+ CRI, 3000°K CCT, 800 lumens, 30,000 hours. Lamp included.

**DIFFUSER**

Handcrafted glass diffuser in Frost/Bubble.

**CONSTRUCTION**

Canopy and oval faceplate (7.5" x 4.75" H) are plated steel. Lampholders are stamped steel, on 0.5" square steel tubing, with plated finish.

**METAL FINISH**

Fixture shall be finished in Bronze, Chrome or Satin Nickel.

**MOUNTING**

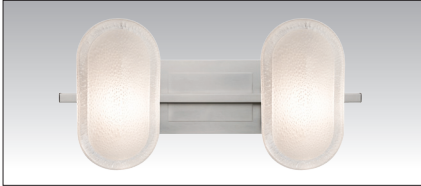
Installs directly to a 4" octagonal outlet box. Wall-mount only. Glass diffuser can be oriented upward or downward.

**LABELS**

UL or ETL Listed. Suitable for Damp Locations (interior use only).



CABO SHOWN IN FROST/BUBBLE (962759)



\*Glass shades can be installed vertically on adjustable fitter

**ORDERING:**

FIXTURE	SHADE OPTIONS	LAMP OPTIONS	METAL FINISH
1WT Sconce	962759 Frost/Bubble	(blank) 60W A19 Incan	CR Chrome
2WT 2-Light		LED 9W LED 120V, dimmable	SN Satin Nickel
3WT 3-Light			

**Ex. 2WT-962759-CR**  
Cabo 2-Light Vanity, Frost/Bubble, Chrome Finish

1WT-962759-SN  
9.25" L x 5.1" H x 5.5" D



2WT-962759-SN  
22" L x 5.1" H x 5.5" D



3WT-962759-SN  
34.75" L x 5.1" H x 5.5" D



**Project Information:**

Empty box for project information.

All dimensions provided are nominal. Allowance must be made for dimensional tolerance in handcrafted glasses.

REV 12/18