



ELANA 26

VANITIES WALL

location:
DAMP

SPECIFICATIONS:

DESCRIPTION

Open-top vanity luminaire with Satin white glass diffuser.

LAMPING

Standard: 60W A19 incandescent 120V, lamp not included. Suitable for dimming with a standard incandescent dimmer (not included).

LED: 9W Replaceable LED source, 120V, dimmable, 90+ CRI, 2800°K CCT, 800 lumens, 30,000 hours, lamp included.

DIFFUSER

Satin White glass diffuser.

CONSTRUCTION

Construction is plated steel.

METAL FINISH

Fixture shall be finished in Chrome or Satin Nickel.

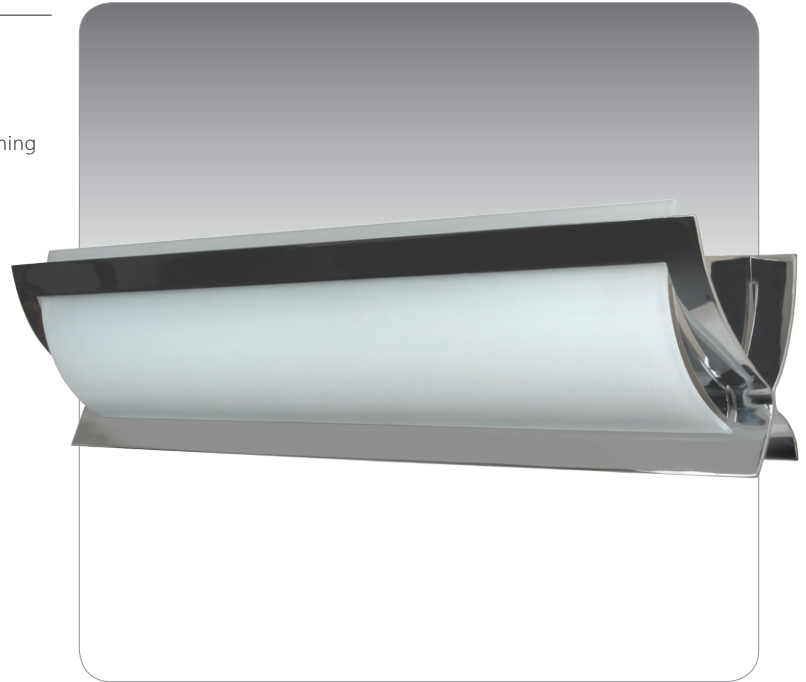
MOUNTING

Installs directly to a 4" octagonal outlet box.

Orient horizontal, wall-mount only.

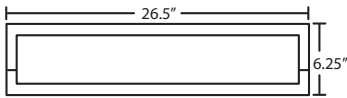
LABELS

UL or ETL Listed. Suitable for Damp Locations (interior use only).



ELANA 26 SHOWN IN SATIN WHITE (ELANA26-SW)

Elana 26:



*Depth is 4.625"

ORDERING:

FIXTURE	DECOR	LAMP OPTIONS	METAL FINISH
ELANA26 26"Vanity	SW Satin White	(blank) 3x 60W A19 Incan LED 3x 9W LED 120V, dimmable	CR Chrome SN Satin Nickel

Ex. ELANA26-SW-CR
Elana 26 Vanity w/ Satin White Glass,
Chrome Finish

Project Information:

All dimensions provided are nominal.
Allowance must be made for dimensional tolerance in handcrafted glasses.

REV 8/21