



POGO

MINI SCONCES WALL

location: **DAMP**

SPECIFICATIONS:

DESCRIPTION

Wall-mounted sconce featuring one handcrafted glass.

LAMPING

Standard: 60W G9 Bi-pin socket, 120V, suitable for dimming. Lamp included.

LED: 5W Replaceable source, 120V, dimmable, 90+ CRI, 3000° K CCT, 450 lumens, 25,000 hours, lamp included.

DIFFUSER

Diffuser shall be handcrafted glass of various decors.

4.5" L x 4.5" H.

CONSTRUCTION

Rectangular canopy (4.75" x 5.5" H) and lampholder are stamped steel, with plated finish.

METAL FINISH

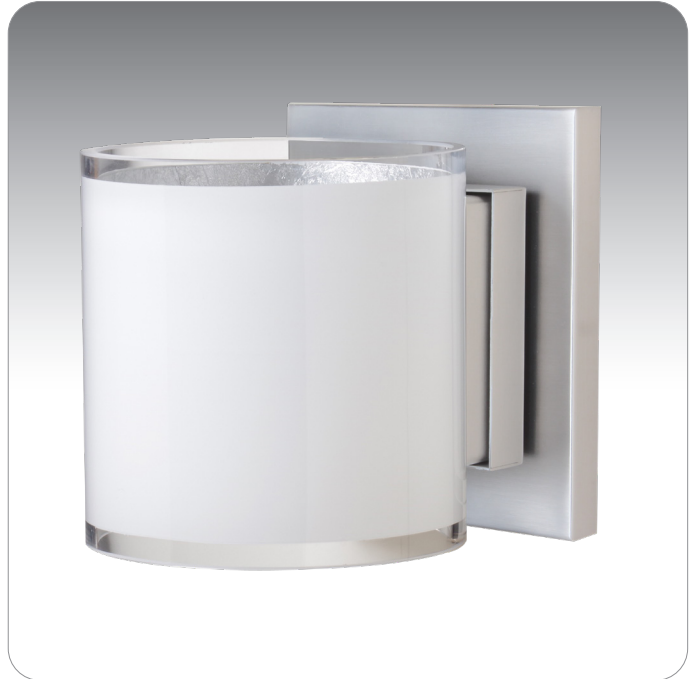
Fixture shall be finished in Bronze, Chrome, or Satin Nickel.

MOUNTING

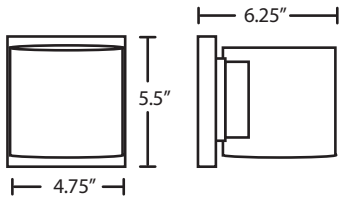
Installs directly to a 4" octagonal outlet box. Wall-mount only.

LABELS

UL or ETL Listed. Suitable for Damp Locations (interior use only).



POGO SHOWN IN WHITE/INNER SILVER (7180SF)



718006
OPAL GLOSSY

7180GF
BLACK/INNER GOLD



ORDERING:

FIXTURE	DECOR	LAMPING OPTIONS	METAL FINISH
1WS Sconce	718006 Opal Glossy	(blank) 60W G9 Socket	BR Bronze
	7180GF Black/Inner Gold	LED 5W LED 120V,	CR Chrome
	7180SF White/Inner Silver	dimnable	SN Satin Nickel

Ex. 1WS-718006-SN

Pogo Mini Sconce w/ Opal Glossy Glass,
Satin Nickel Finish

Project Information:

All dimensions provided are nominal.
Allowance must be made for dimensional tolerance in handcrafted glasses.

REV 10/24