



C A B O

VANITIES WALL

location:
DAMP

SPECIFICATIONS:

DESCRIPTION

1-3 Light vanity luminaires featuring handcrafted glass.

LAMPING

Standard: 60W E26 base A19, 120V, lamp not included. Dimmable with standard incandescent dimmer (not included).

LED: 9W Replaceable source, 120V, dimmable, 90+ CRI, 3000°K CCT, 800 lumens, 30,000 hours. Lamp included.

DIFFUSER

Handcrafted glass diffuser in Frost/Bubble.

CONSTRUCTION

Canopy and oval faceplate (7.5" x 4.75" H) are plated steel. Lampholders are stamped steel, on 0.5" square steel tubing, with plated finish.

METAL FINISH

Fixture shall be finished in Bronze, Chrome or Satin Nickel.

MOUNTING

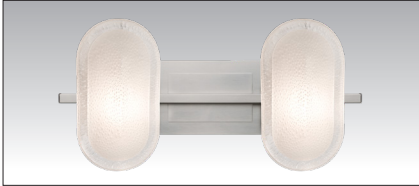
Installs directly to a 4" octagonal outlet box. Wall-mount only. Glass diffuser can be oriented upward or downward.

LABELS

UL or ETL Listed. Suitable for Damp Locations (interior use only).



CABO SHOWN IN FROST/BUBBLE (962759)



*Glass shades can be installed vertically on adjustable fitter

ORDERING:

FIXTURE	SHADE OPTIONS	LAMP OPTIONS	METAL FINISH
1WT Sconce	962759 Frost/Bubble	(blank) 60W A19	CR Chrome
2WT 2-Light		LED 9W LED 120V, dimmable	SN Satin Nickel
3WT 3-Light			

Ex. 2WT-962759-CR
Cabo 2-Light Vanity, Frost/Bubble, Chrome Finish

1WT-962759-SN
9.25" L x 5.1" H x 5.5" D



2WT-962759-SN
22" L x 5.1" H x 5.5" D



3WT-962759-SN
34.75" L x 5.1" H x 5.5" D



Project Information:

Empty box for project information.

All dimensions provided are nominal. Allowance must be made for dimensional tolerance in handcrafted glasses.

REV 10/24