



KIRK 12

SEMI-FLUSH MOUNT CEILING

location:
DRY

SPECIFICATIONS:

DESCRIPTION

Semi-flush mounted ceiling luminaire, featuring corrugated cardboard shade and removable white acrylic shield.

LAMPING

LED: 9W Replaceable LED source, 120V, CL dimmable, 80+ CRI, 2800°K CCT, 800 lumens, 30,000 hours. Lamp included.

DIFFUSER

Shade shall be of corrugated cardboard material and includes a removable white acrylic shield. 12" L x 12"W x 10"H

CONSTRUCTION

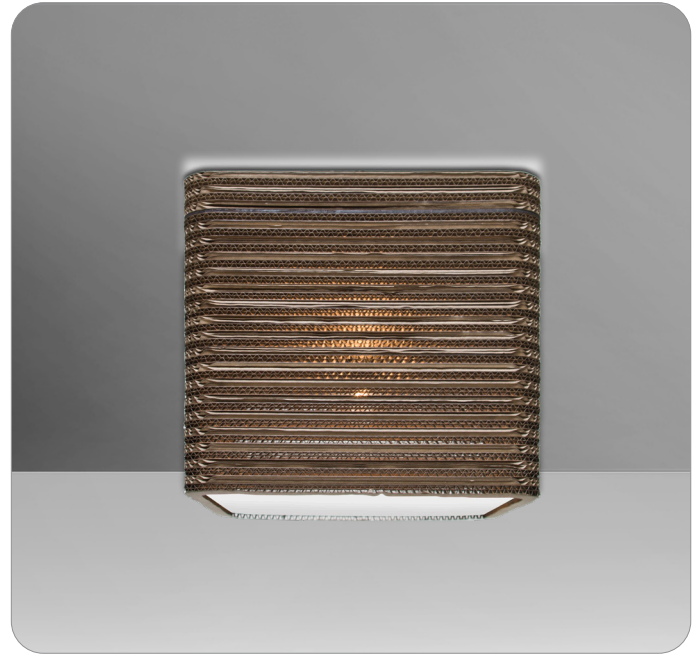
Canopy (5" dia.) is plated stamped steel. Canopy and glass retainer hardware are available in either Bronze or Satin Nickel finish.

MOUNTING

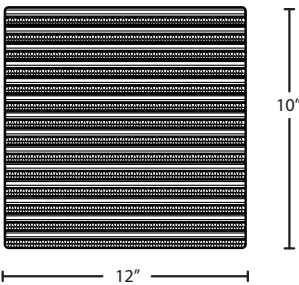
Installs directly to a 4" octagonal outlet box, centered on fixture. 90°C supply wire required for incandescent lamping.

LABELS

UL or ETL Listed. Suitable for Dry Locations (interior use only).



KIRK 12



ORDERING:

FIXTURE/DECOR	LAMP OPTIONS	METAL FINISH
KIRK12C Kirk 12	LED 9W LED 120V, dimmable	BR Bronze SN Satin Nickel

Ex. KIRK12C-LED-SN
Kirk 12 Ceiling, Satin Nickel Finish

Project Information:

All dimensions provided are nominal. Allowance must be made for dimensional tolerance in handcrafted glasses.

REV 10/24