



RAIL SECTIONS

12V MONORAIL

location:
DRY

SPECIFICATIONS:

DESCRIPTION

Ultra-low profile brass rail (less than half-inch high) is hand-bendable (no tools required). Field-cuttable for a variety of configurations. Ships in 4' or 8' lengths. Rated for 25A.

COMPATIBILITY

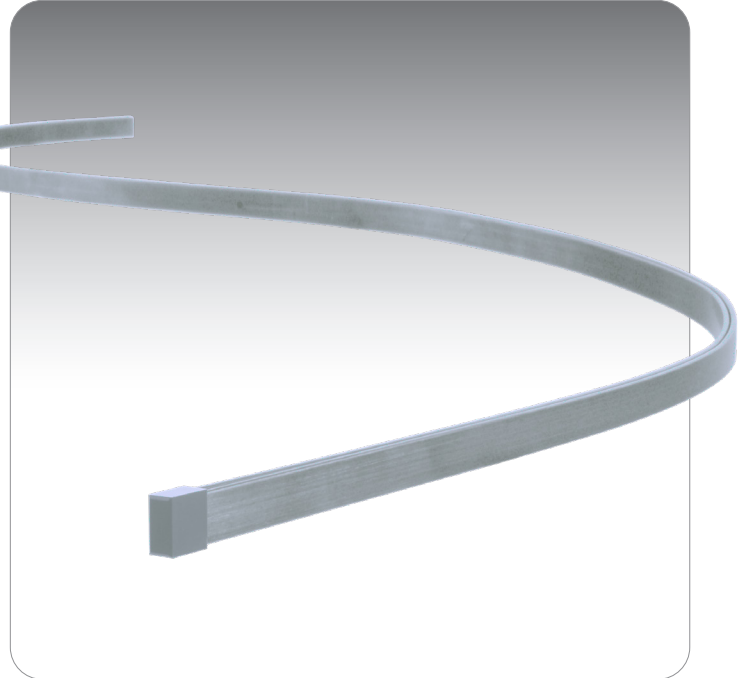
Rail is compatible with all Besa 12V Monorail system components and all Besa rail-ready Quick-Connect elements (ordered separately).

METAL FINISH

Rail is finished in Black or Satin Nickel.

LABELS

UL or ETL Listed. Suitable for Dry Locations (interior use only).

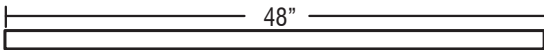


8FT RAIL IN SATIN NICKEL

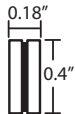
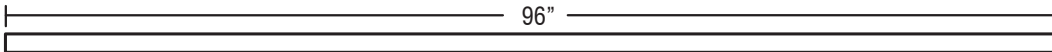


8FT RAIL IN BLACK

4FT: 48" L x 0.18" W x 0.4" H



8FT: 96" L x 0.18" W x 0.4" H



4' Rail Item / Finish

R12-RAIL4-BK Black

R12-RAIL4-SN Satin Nickel

8' Rail Item / Finish

R12-RAIL8-BK Black

R12-RAIL8-SN Satin Nickel

Project Information:

All dimensions provided are nominal. Allowance must be made for dimensional tolerance in handcrafted glasses.

REV 10/22