



# TAMMI 3

12V SPOTLIGHTS

location:  
**DRY**

## SPECIFICATIONS:

### DESCRIPTION

Low voltage spotlight with handcrafted glass. Includes Quick-Connect jack.

### LAMPING

**Standard:** 50W Shielded flood 12V halogen MR16 lamp, included.

**LED:** 7W Replaceable 12V LED MR16 with backlight, dimmable, 90+ CRI, 3000°K CCT, 500 lumens, 25,000 hours, lamp included.

### DIFFUSER

Shade shall be handcrafted glass of various decors.

Diameter of 2.75" and height of 3.325"

### QUICK-CONNECT JACK

Integral Quick-Connect jack is compatible with Besa Rail Adapter.

### ELEMENT OPTIONS

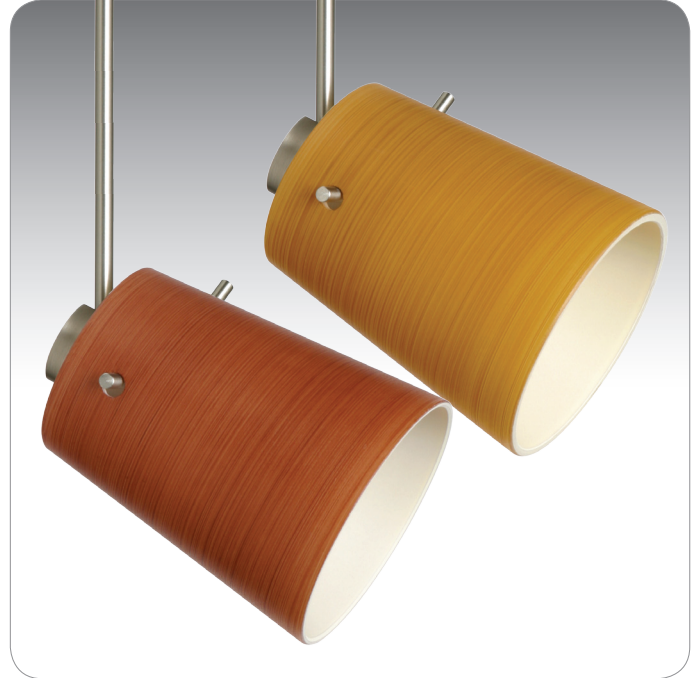
Refer to next page. Available as either a Quick-Connect element only or with Rail Adapter for use with Besa Monorail. Longer stem options are also available.

### METAL FINISH

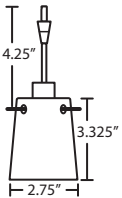
Available in Bronze or Satin Nickel.

### LABELS

UL or ETL Listed. Suitable for Dry Locations (interior use only).



TAMMI 3 IN CHERRY & OAK



5118VM  
VANILLA MATTE



511880  
AMBER MATTE



5118AM  
APRICOT MATTE



For ordering information, see next page

All dimensions provided are nominal.  
Allowance must be made for dimensional tolerance in handcrafted glasses.

REV 10/22



ORDERING:

QUICK-CONNECT -	SHADE OPTIONS -	LAMP OPTIONS -	STEM OPTIONS -	METAL FINISH
SP Jack Only	511880 Amber Matte	(blank) 50W Hal MR16	(blank) Standard	BR Bronze
RSP Rail-Ready	5118AM Apricot Matte	LED 7W LED MR16, dimmable	06 6"	SN Satin Nickel
	5118CH Cherry		12 12"	
	5118OK Oak		18 18"	
	5118VM Vanilla Matte			

**Ex. SP-5118CH-SN**  
 Tammi 3 Spotlight w/ Cherry Glass,  
 Satin Nickel Finish

SPOTLIGHT OPTIONS:

SP SPOTLIGHT ELEMENT ONLY



- Spotlight Fixture with Shade
- Quick-Connect Jack integral
- Compatible with Besa Canopies and Rail Adapter

RSP SPOTLIGHT + RAIL ADAPTER



READY FOR RAIL

- Spotlight Fixture with Shade, plus Rail Adapter
- Quick-Connect Jack integral
- Compatible with Besa Monorail System

Longer Stem Options

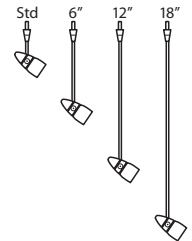
Besa spotlights have a standard stem 1.5" long. For a spotlight with a longer drop, order a stem length of 6", 12" or 18".

Not suitable for use on sloped ceiling when spotlight is installed on a quick-connect canopy.

**Note: These are NOT field installable. The complete unit is built at the factory.**

Available options are

- SP06** 6" stem adds 3.625" to overall length
- SP12** 12" stem adds 9.625" to overall length
- SP18** 18" stem adds 15.625" to overall length



**Project Information:**